

EXCELLENCE IN TRANSMISSION & MOTION



S K Sales & Services

Power Transmission & Motion Control

MATERIAL HANDLING | MOTION CONTROL
POWER TRANSMISSION | CRANE COMPONENTS

www.SKTechnology.co.in

S K Sales and Services, is an established venture from Oct 2012 and working towards giving complete solution for industrial applications mainly in Power Transmission, Motion Control, Automation, Process Industry and Material Handling.

Utilizing indepth technical know-how to assist in providing techno-commercially engineered optimum solutions to fulfill industry needs. For that, we set 3 "R"s as our main aspects:

- Readiness - Of speed, in response with continuous improvement in technology.
- Reliability - Commitment of deliveries of services, complete solutions and products with zero defects in services or products offered.
- Relationship - Long term relationship as partners.

We, SK Sales and Services, as a team of core professionals, are committed to provide value added solutions to our esteemed customers to their highest satisfaction.

Industry we serve:

- Crane & Material Handling, Oil and Gas, Sugar Industry Equipments.
- Pressure Vessel, Agitators and Centrifuges, Pumps Air Compressors, Industrial Fan OEM's.
- Printing & Packaging, Special Purpose Machinery, Steel and Cement.
- Off Highway sector, Wind Energy, Building machinery and construction. Automobile.

MHE & AUTOMATION

Optimal compounding solutions with a high material handling technology know-how and extensive industry experience.

A state-of-the-art infrastructure for world class Industrial Material Handling Equipment, Manufacturer of all types of EOT Cranes and other MHEs such as Conveyors, Scissor Lifts, Chain Hoists.

Exploring into Car-Parking Systems and Automation.

POWER TRANSMISSION & MOTION

With great technical expertise and rich industry experience, SK Sales & Services is proud partners with various Power Transmission and Motion Control Equipment Manufacturers.

Our vast scope of products can provide a 360 degree solutions to our valued clients, with an aim to provide them with end-to-end industrial solutions.



POWER TRANSMISSION

COUPLINGS | KFG & GEARex®

- Double /Triple Crowned Gear Coupling,
- Used for all applications in General Engineering
- Coupling in accordance with AGMA 9008-B00
- Max. Torque = 820000 Nm



COUPLINGS | BOWex®

- Curved-tooth gear coupling
- Torsionally stiff, double cardanic
- Material combination: nylon / steel
- Torque : 5 Nm - 2500 Nm
- Finish bores : Ø 6mm - Ø125mm

COUPLINGS | RADEX®-N

- Steel laminae coupling as per API 610
- Torsionally stiff, maintenance free
- Laminae made from stainless steel
- DBSE as per customer requirement
- Available with composite spacer
- Torque: 15 Nm - 50000 Nm



COUPLING | RADEX®-NC

- Backlash-free torque transmission
- Increased torsional stiffness
- Low mass moment of inertia
- Stainless steel discs
- Single or double cardanic design

COUPLINGS | TOOLFLEX®

- Backlash-free, torsionally stiff, maintenance-free
- Non-positive bellow-hub connection
- Suitable for high temperatures due to flanged insert connection (max. 280° C)
- Well-resistant to corrosion



MOTION CONTROL



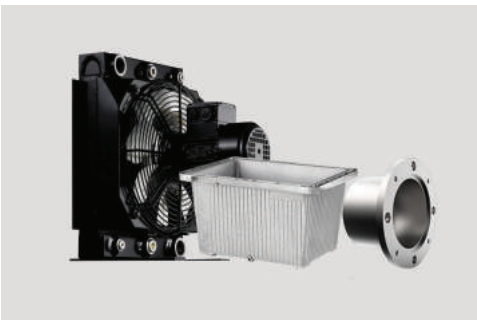
COUPLINGS | CLAMPEX®

- Shaft Hub Connection
- Free of Wear & Tear
- Axial Fixing of Hub
- Easy Assembly
- Torque Transmission Up to 956500 Nm



TIMING BELTS

- Fiberglass tensile cord provides high strength, excellent flex life, and high resistance to elongation.
- Neoprene body provides protection against grime, grease, oil, moisture, and other contaminants



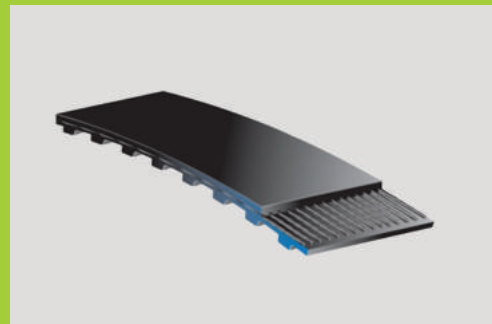
COUPLINGS | ROTEX® GS

- Backlash-free jaw-type, axial plug-in
- Vibration reducing
- Failsafe, maintenance free
- Torque: 0.15 Nm - 1465 Nm
- Bore diameter : 2 mm - 95 mm



BRAKES

- Comprehensive range 20 - 10,000 Nm
- Simple assembly to motor
- No dismantling of brake required
- No setting required when changing
- Compatibility of consumable spares



HYDRAULIC COMPONENTS

- Bellhousing & Accessories: Foot Flange, Damping Elements & Pads
- Aluminum Tanks & Accessories: Cleaning Cover, Oil Level Indicators, Temperature Control & Monitoring
- Oil Coolers: Air Cooled & Water Cooled

POWER TRANSMISSION

CLUTCHES

- Single plate and multi-plate clutch
- Reduced maintenance
- SAE range of connections
- Close coupling
- Support for flange mounted pumps
- Extends pump/ alternator/ compressor life

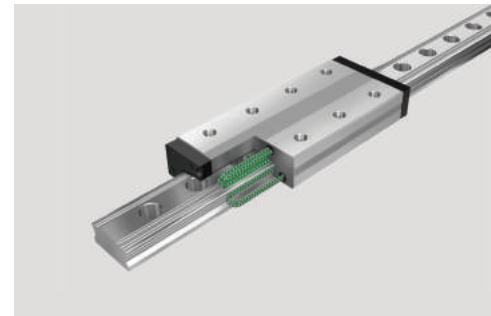


BALL SCREWS

- Works on low noise
- Has small torque fluctuations
- Has long-term, maintenance-free operation by using a ball cage

LM GUIDEWAYS

- Eliminates friction between moving parts
- Achieves low noise/ acceptable running sound
- Long-term maintenance-free operation
- Superbly high speed response



GEARBOXES

- Lubrication change first after 15000 hrs
- Low noise gearing
- Mains connection 110 ... 690V
- Enclosure IP65 (Standard), IP66 (Optional)
- Connection Standard with CAGE CLAMP®

GEAR BOXES

- Easy, functional shaft-mounting design
- Minimum maintenance requirements
- High, reliable and tested performance
- Suitable for the heaviest duties
- Sizes: 20, Power: 0.09 to 1000 kW
- Nominal Torque: $\leq 25,00,000$ Nm
- Transmission ratio: 2 to 5000



MOTION CONTROL



TRANSMISSION CHAINS

- Unbeatable wear resistance
- Fatigue performance capabilities,
- Designed to maximise productivity
- Minimises downtime

TRANSMISSION CHAINS

- Brass coated chain
- Prevent rusting
- Extended operational life
- X-Ring Chain
- High-Quality Synthetic Rubber
- Less friction



WE PARTNER WITH THE BEST!



RENOLD



TRANSMATIX



S K Sales & Services

Power Transmission & Motion Control

SK Sales & Services

HO: DIII Block, Pap 6, Near St. Andrews School,
MIDC, Chinchwad, Pune - 411019

+91 8087072381 | +91 9881748101
+91 9763568731

Works: Plot No. A-21/7, Phase 2, Bhagini
Nivedita IC, Khalumbre, Chakan, Pune - 410501

sales@sktechnology.co.in
info@sktechnology.co.in

GST No: 27ANDPK4149E1Z5
www.SKTechnology.co.in